

# DELTA $\Delta$ ANALYTICAL

## PRODUCT SPECIFICATION

### FoodState™ Boron Concentrate

Product No. 100025

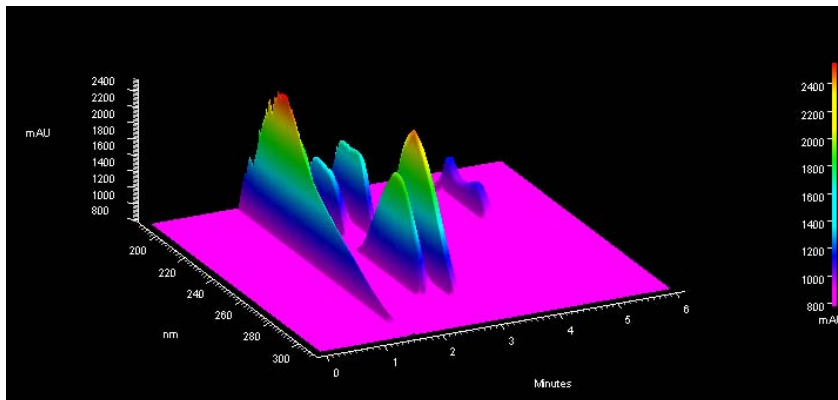
#### PRODUCT CHARACTERISTICS

Botanical Name  
Plant Part  
Description  
Flavor  
Preservatives

#### SPECIFICATION

*Saccharomyces cerevisiae*  
Whole Plant  
Fresh/Frozen *S. cerevisiae*  
Typical of *S. cerevisiae*  
None

#### Nutrient Peptide Chromatogram



#### Finished Raw Material



#### PHYSICAL DATA

Residual Moisture  
Bulk Density (Tapped)

#### METHOD

Thermogravimetric  
USP28<616>

#### SPECIFICATION

$3.5 \pm 1.5\%$   
 $0.60 \pm 0.10$  g/mL

#### NUTRITION INFORMATION

Boron  
  
Calories (per 100 grams)  
Total Fat  
Total Carbohydrate  
Protein

ICP  
  
Calculation

1.0% Minimum  
  
318 kcal  
2% Maximum  
25% Minimum  
50% Minimum

#### MICROBIOLOGICAL PROFILE

Total Aerobic Plate Count  
*E. Coli*  
Total Coliforms  
Yeast & Mold

AOAC 966.23  
AOAC 991.14  
AOAC 991.14  
FDA-BAM 7<sup>th</sup> Ed.

10,000 per Gram Maximum  
Less than 10 per Gram Maximum  
1,000 per Gram Maximum  
300 per Gram Maximum

#### PACKAGING and STORAGE

Double poly bag with desiccant packs in a fiber drum. Cool dry storage (15-30°C).  
Pack Size: 50 kgs

ISSUED DATE: 11/16/05

# DELTA $\Delta$ ANALYTICAL

## PRODUCT SPECIFICATION

### FoodState™ Calcium Concentrate

Product No. 100021

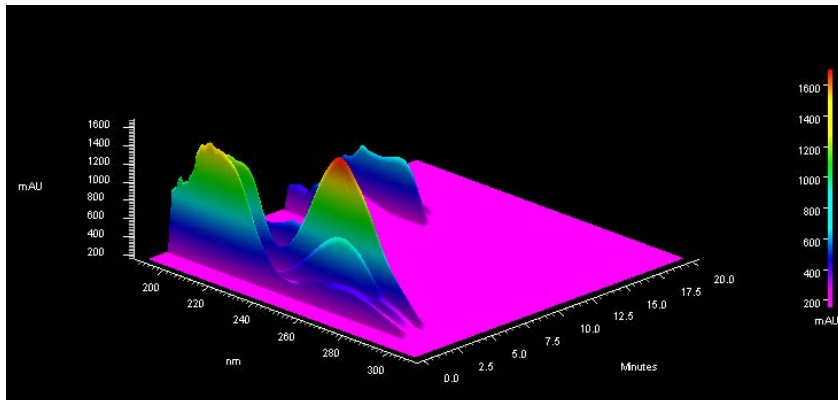
#### PRODUCT CHARACTERISTICS

Botanical Name  
Plant Part  
Description  
Flavor  
Preservatives

#### SPECIFICATION

*Saccharomyces cerevisiae*  
Whole Plant  
Fresh/Frozen *S. cerevisiae*  
Typical of *S. cerevisiae*  
None

#### Nutrient Peptide Chromatogram



#### Finished Raw Material



#### PHYSICAL DATA

Residual Moisture  
Bulk Density (Tapped)

#### METHOD

Thermogravimetric  
USP28<616>

#### SPECIFICATION

$3.5 \pm 1.5\%$   
 $0.70 \pm 0.10$  g/mL

#### NUTRITION INFORMATION

Calcium

ICP

5.0% Minimum

Calories (per 100 grams)

Calculation

278 kcal

Total Fat

2% Maximum

Total Carbohydrate

20% Minimum

Protein

45% Minimum

#### MICROBIOLOGICAL PROFILE

Total Aerobic Plate Count

AOAC 966.23

10,000 per Gram Maximum

*E. Coli*

AOAC 991.14

Less than 10 per Gram Maximum

Total Coliforms

AOAC 991.14

1,000 per Gram Maximum

Yeast & Mold

FDA-BAM 7<sup>th</sup> Ed.

300 per Gram Maximum

#### PACKAGING and STORAGE

Double poly bag with desiccant packs in a fiber drum. Cool dry storage (15-30°C).

Pack Size: 50 kgs

ISSUED DATE: 11/16/05

# DELTA $\Delta$ ANALYTICAL

## PRODUCT SPECIFICATION

### FoodState™ Chromium Concentrate

Product No. 100015

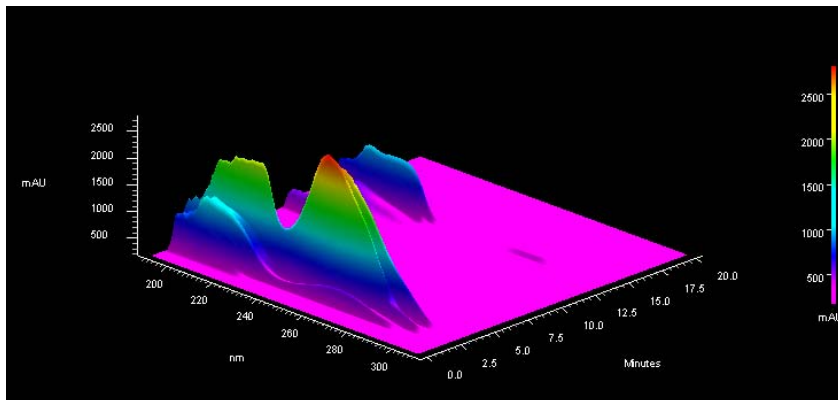
#### PRODUCT CHARACTERISTICS

Botanical Name  
Plant Part  
Description  
Flavor  
Preservatives

#### SPECIFICATION

*Saccharomyces cerevisiae*  
Whole Plant  
Fresh/Frozen *S. cerevisiae*  
Typical of *S. cerevisiae*  
None

#### Nutrient Peptide Chromatogram



#### Finished Raw Material



#### PHYSICAL DATA

Residual Moisture  
Bulk Density (Tapped)

#### METHOD

Thermogravimetric  
USP28<616>

#### SPECIFICATION

$3.5 \pm 1.5\%$   
 $0.70 \pm 0.10$  g/mL

#### NUTRITION INFORMATION

Chromium

ICP

0.2% Minimum

Calories (per 100 grams)

Calculation

218 kcal

Total Fat

2% Maximum

Total Carbohydrate

10% Minimum

Protein

40% Minimum

#### MICROBIOLOGICAL PROFILE

Total Aerobic Plate Count

AOAC 966.23

10,000 per Gram Maximum

*E. Coli*

AOAC 991.14

Less than 10 per Gram Maximum

Total Coliforms

AOAC 991.14

1,000 per Gram Maximum

Yeast & Mold

FDA-BAM 7<sup>th</sup> Ed.

300 per Gram Maximum

#### PACKAGING and STORAGE

Double poly bag with desiccant packs in a fiber drum. Cool dry storage (15-30°C).

Pack Size: 50 kgs

ISSUED DATE: 11/16/05

# DELTA ANALYTICAL

## PRODUCT SPECIFICATION

### FoodState™ Copper Concentrate

Product No. 100034

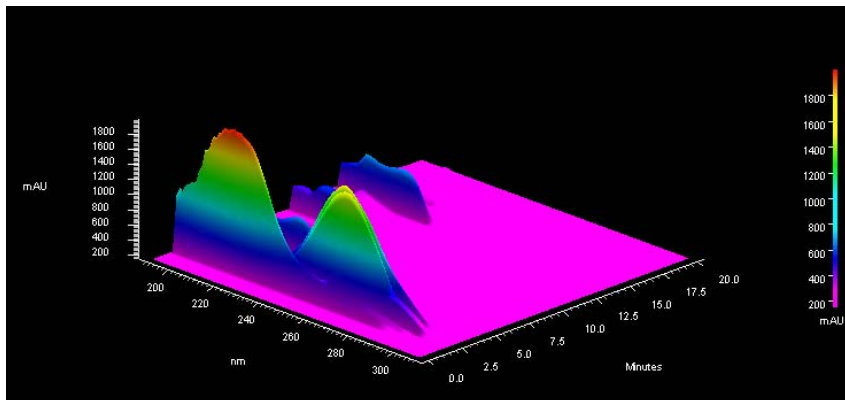
#### PRODUCT CHARACTERISTICS

Botanical Name  
Plant Part  
Description  
Flavor  
Preservatives

#### SPECIFICATION

*Saccharomyces cerevisiae*  
Whole Plant  
Fresh/Frozen *S. cerevisiae*  
Typical of *S. cerevisiae*  
None

#### Nutrient Peptide Chromatogram



#### Finished Raw Material



#### PHYSICAL DATA

Residual Moisture  
Bulk Density (Tapped)

#### METHOD

Thermogravimetric  
USP28<616>

#### SPECIFICATION

3.5 ± 1.5%  
0.80 ± 0.10 g/mL

#### NUTRITION INFORMATION

Copper  
  
Calories (per 100 grams)  
Total Fat  
Total Carbohydrate  
Protein

ICP  
  
Calculation

1.0% Minimum  
  
238 kcal  
2% Maximum  
15% Minimum  
40% Minimum

#### MICROBIOLOGICAL PROFILE

Total Aerobic Plate Count  
*E. Coli*  
Total Coliforms  
Yeast & Mold

AOAC 966.23  
AOAC 991.14  
AOAC 991.14  
FDA-BAM 7<sup>th</sup> Ed.

10,000 per Gram Maximum  
Less than 10 per Gram Maximum  
1,000 per Gram Maximum  
300 per Gram Maximum

#### PACKAGING and STORAGE

Double poly bag with desiccant packs in a fiber drum. Cool dry storage (15-30°C).  
Pack Size: 50 kgs

ISSUED DATE: 11/16/05

# DELTA $\Delta$ ANALYTICAL

## PRODUCT SPECIFICATION

### FoodState™ Iodine Concentrate

Product No. 100024

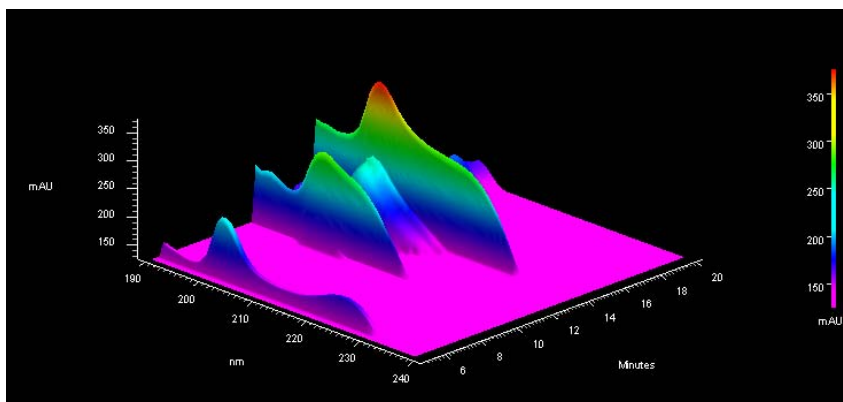
#### PRODUCT CHARACTERISTICS

Botanical Name  
Plant Part  
Description  
Flavor  
Preservatives

#### SPECIFICATION

*Saccharomyces cerevisiae*  
Whole Plant  
Fresh/Frozen *S. cerevisiae*  
Typical of *S. cerevisiae*  
None

#### Nutrient Peptide Chromatogram



#### Finished Raw Material



#### PHYSICAL DATA

Residual Moisture  
Bulk Density (Tapped)

#### METHOD

Thermogravimetric  
USP28<616>

#### SPECIFICATION

$3.5 \pm 1.5\%$   
 $0.75 \pm 0.10 \text{ g/mL}$

#### NUTRITION INFORMATION

Iodine  
  
Calories (per 100 grams)  
Total Fat  
Total Carbohydrate  
Protein

ICP  
  
Calculation

1.5% Minimum  
  
318 kcal  
2% Maximum  
12% Minimum  
50% Minimum

#### MICROBIOLOGICAL PROFILE

Total Aerobic Plate Count  
*E. Coli*  
Total Coliforms  
Yeast & Mold

AOAC 966.23  
AOAC 991.14  
AOAC 991.14  
FDA-BAM 7<sup>th</sup> Ed.

10,000 per Gram Maximum  
Less than 10 per Gram Maximum  
1,000 per Gram Maximum  
300 per Gram Maximum

#### PACKAGING and STORAGE

Double poly bag with desiccant packs in a fiber drum. Cool dry storage (15-30°C).  
Pack Size: 50 kgs

ISSUED DATE: 11/16/05

# DELTA $\Delta$ ANALYTICAL

## PRODUCT SPECIFICATION

### FoodState™ Inositol Concentrate

Product No. 100005

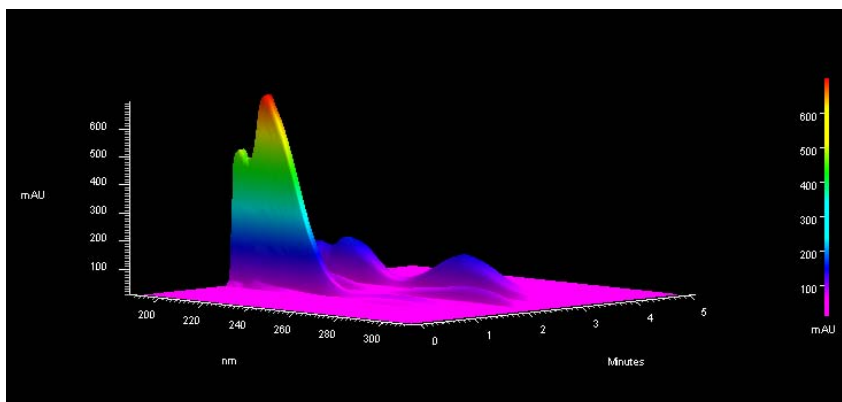
#### PRODUCT CHARACTERISTICS

Botanical Name  
Plant Part  
Description  
Flavor  
Preservatives

#### SPECIFICATION

*Saccharomyces cerevisiae*  
Whole Plant  
Fresh/Frozen *S. cerevisiae*  
Typical of *S. cerevisiae*  
None

#### Nutrient Peptide Chromatogram



#### Finished Raw Material



#### PHYSICAL DATA

Residual Moisture  
Bulk Density (Tapped)

#### METHOD

Thermogravimetric  
USP28<616>

#### SPECIFICATION

$3.0 \pm 1.5\%$   
 $0.65 \pm 0.10 \text{ g/mL}$

#### NUTRITION INFORMATION

Inositol

Microbiological

25.0% Minimum

Calories (per 100 grams)

Calculation

229 kcal

Total Fat

1% Maximum

Total Carbohydrate

15% Minimum

Protein

40% Minimum

#### MICROBIOLOGICAL PROFILE

Total Aerobic Plate Count

AOAC 966.23

10,000 per Gram Maximum

*E. Coli*

AOAC 991.14

Less than 10 per Gram Maximum

Total Coliforms

AOAC 991.14

1,000 per Gram Maximum

Yeast & Mold

FDA-BAM 7<sup>th</sup> Ed.

300 per Gram Maximum

#### PACKAGING and STORAGE

Double poly bag with desiccant packs in a fiber drum. Cool dry storage (15-30°C).

Pack Size: 50 kgs

ISSUED DATE: 11/16/05

# DELTA $\Delta$ ANALYTICAL

## PRODUCT SPECIFICATION

### FoodState™ Iron Concentrate

Product No. 100027

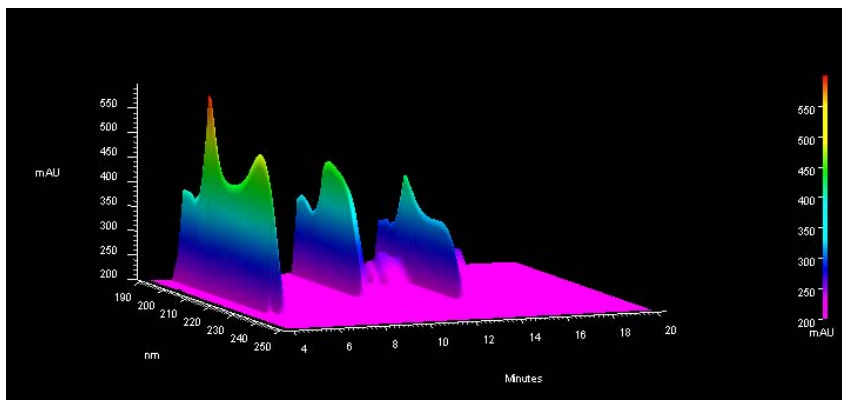
#### PRODUCT CHARACTERISTICS

Botanical Name  
Plant Part  
Description  
Flavor  
Preservatives

#### SPECIFICATION

*Saccharomyces cerevisiae*  
Whole Plant  
Fresh/Frozen *S. cerevisiae*  
Typical of *S. cerevisiae*  
None

#### Nutrient Peptide Chromatogram



#### Finished Raw Material



#### PHYSICAL DATA

Residual Moisture  
Bulk Density (Tapped)

#### METHOD

Thermogravimetric  
USP28<616>

#### SPECIFICATION

$3.5 \pm 1.5\%$   
 $0.90 \pm 0.10 \text{ g/mL}$

#### NUTRITION INFORMATION

Iron

ICP

5.0% Minimum

Calories (per 100 grams)

Calculation

238 kcal

Total Fat

2% Maximum

Total Carbohydrate

15% Minimum

Protein

40% Minimum

#### MICROBIOLOGICAL PROFILE

Total Aerobic Plate Count

AOAC 966.23

10,000 per Gram Maximum

*E. Coli*

AOAC 991.14

Less than 10 per Gram Maximum

Total Coliforms

AOAC 991.14

1,000 per Gram Maximum

Yeast & Mold

FDA-BAM 7<sup>th</sup> Ed.

300 per Gram Maximum

#### PACKAGING and STORAGE

Double poly bag with desiccant packs in a fiber drum. Cool dry storage (15-30°C).

Pack Size: 50 kgs

ISSUED DATE: 11/16/05

# DELTA $\Delta$ ANALYTICAL

## PRODUCT SPECIFICATION

### FoodState™ Magnesium Concentrate

Product No. 100022

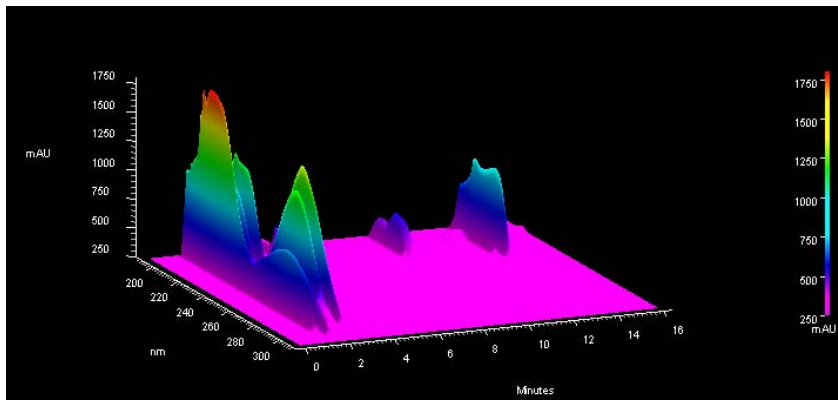
#### PRODUCT CHARACTERISTICS

Botanical Name  
Plant Part  
Description  
Flavor  
Preservatives

#### SPECIFICATION

*Saccharomyces cerevisiae*  
Whole Plant  
Fresh/Frozen *S. cerevisiae*  
Typical of *S. cerevisiae*  
None

#### Nutrient Peptide Chromatogram



#### Finished Raw Material



#### PHYSICAL DATA

Residual Moisture  
Bulk Density (Tapped)

#### METHOD

Thermogravimetric  
USP28<616>

#### SPECIFICATION

$5.0 \pm 1.5\%$   
 $0.80 \pm 0.10 \text{ g/mL}$

#### NUTRITION INFORMATION

Magnesium

ICP

5.0% Minimum

Calories (per 100 grams)

Calculation

238 kcal

Total Fat

2% Maximum

Total Carbohydrate

15% Minimum

Protein

40% Minimum

#### MICROBIOLOGICAL PROFILE

Total Aerobic Plate Count

AOAC 966.23

10,000 per Gram Maximum

*E. Coli*

AOAC 991.14

Less than 10 per Gram Maximum

Total Coliforms

AOAC 991.14

1,000 per Gram Maximum

Yeast & Mold

FDA-BAM 7<sup>th</sup> Ed.

300 per Gram Maximum

#### PACKAGING and STORAGE

Double poly bag with desiccant packs in a fiber drum. Cool dry storage (15-30°C).

Pack Size: 50 kgs

ISSUED DATE: 11/16/05



# DELTA ANALYTICAL

## PRODUCT SPECIFICATION

### FoodState™ Manganese Concentrate

Product No. 100016

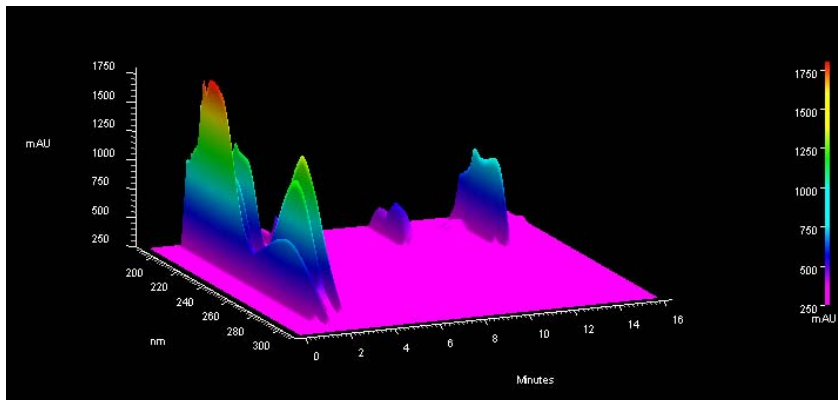
#### PRODUCT CHARACTERISTICS

Botanical Name  
Plant Part  
Description  
Flavor  
Preservatives

#### SPECIFICATION

*Saccharomyces cerevisiae*  
Whole Plant  
Fresh/Frozen *S. cerevisiae*  
Typical of *S. cerevisiae*  
None

#### Nutrient Peptide Chromatogram



#### Finished Raw Material



#### PHYSICAL DATA

Residual Moisture  
Bulk Density (Tapped)

#### METHOD

Thermogravimetric  
USP28<616>

#### SPECIFICATION

$3.5 \pm 1.5\%$   
 $0.85 \pm 0.10 \text{ g/mL}$

#### NUTRITION INFORMATION

Manganese

ICP

5.0% Minimum

Calories (per 100 grams)

Calculation

258 kcal

Total Fat

2% Maximum

Total Carbohydrate

30% Minimum

Protein

40% Minimum

#### MICROBIOLOGICAL PROFILE

Total Aerobic Plate Count

AOAC 966.23

10,000 per Gram Maximum

*E. Coli*

AOAC 991.14

Less than 10 per Gram Maximum

Total Coliforms

AOAC 991.14

1,000 per Gram Maximum

Yeast & Mold

FDA-BAM 7<sup>th</sup> Ed.

300 per Gram Maximum

#### PACKAGING and STORAGE

Double poly bag with desiccant packs in a fiber drum. Cool dry storage (15-30°C).

Pack Size: 50 kgs

ISSUED DATE: 11/16/05

# DELTA $\Delta$ ANALYTICAL

## PRODUCT SPECIFICATION

### FoodState™ Molybdenum Concentrate

Product No. 100019

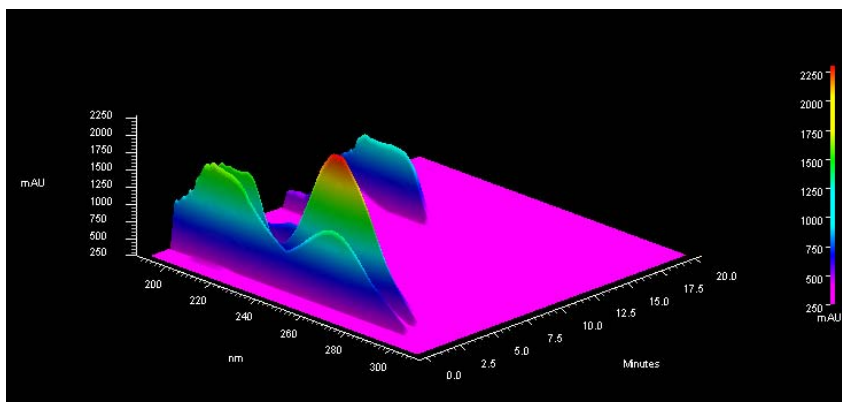
#### PRODUCT CHARACTERISTICS

Botanical Name  
Plant Part  
Description  
Flavor  
Preservatives

#### SPECIFICATION

*Saccharomyces cerevisiae*  
Whole Plant  
Fresh/Frozen *S. cerevisiae*  
Typical of *S. cerevisiae*  
None

#### Nutrient Peptide Chromatogram



#### Finished Raw Material



#### PHYSICAL DATA

Residual Moisture  
Bulk Density (Tapped)

#### METHOD

Thermogravimetric  
USP28<616>

#### SPECIFICATION

$3.5 \pm 1.5\%$   
 $0.75 \pm 0.10 \text{ g/mL}$

#### NUTRITION INFORMATION

Molybdenum  
  
Calories (per 100 grams)  
Total Fat  
Total Carbohydrate  
Protein

ICP  
  
Calculation

0.2% Minimum  
  
298 kcal  
2% Maximum  
30% Minimum  
40% Minimum

#### MICROBIOLOGICAL PROFILE

Total Aerobic Plate Count  
*E. Coli*  
Total Coliforms  
Yeast & Mold

AOAC 966.23  
AOAC 991.14  
AOAC 991.14  
FDA-BAM 7<sup>th</sup> Ed.

10,000 per Gram Maximum  
Less than 10 per Gram Maximum  
1,000 per Gram Maximum  
300 per Gram Maximum

#### PACKAGING and STORAGE

Double poly bag with desiccant packs in a fiber drum. Cool dry storage (15-30°C).  
Pack Size: 50 kgs

ISSUED DATE: 11/16/05

# DELTA ANALYTICAL

## PRODUCT SPECIFICATION

### FoodState™ Phosphorus Concentrate

Product No. 100035

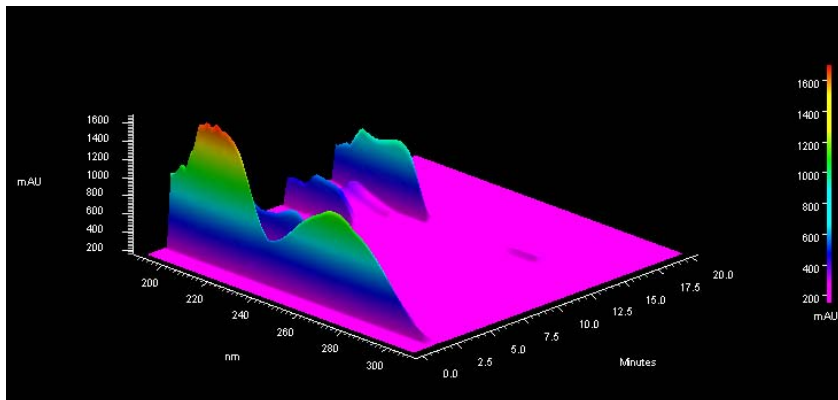
#### PRODUCT CHARACTERISTICS

Botanical Name  
Plant Part  
Description  
Flavor  
Preservatives

#### SPECIFICATION

*Saccharomyces cerevisiae*  
Whole Plant  
Fresh/Frozen *S. cerevisiae*  
Typical of *S. cerevisiae*  
None

#### Nutrient Peptide Chromatogram



#### Finished Raw Material



#### PHYSICAL DATA

Residual Moisture  
Bulk Density (Tapped)

#### METHOD

Thermogravimetric  
USP28<616>

#### SPECIFICATION

$3.5 \pm 1.5\%$   
 $0.75 \pm 0.10 \text{ g/mL}$

#### NUTRITION INFORMATION

Phosphorous

ICP

5.0% Minimum

Calories (per 100 grams)

Calculation

258 kcal

Total Fat

2% Maximum

Total Carbohydrate

20% Minimum

Protein

40% Minimum

#### MICROBIOLOGICAL PROFILE

Total Aerobic Plate Count

AOAC 966.23

10,000 per Gram Maximum

*E. Coli*

AOAC 991.14

Less than 10 per Gram Maximum

Total Coliforms

AOAC 991.14

1,000 per Gram Maximum

Yeast & Mold

FDA-BAM 7<sup>th</sup> Ed.

300 per Gram Maximum

#### PACKAGING and STORAGE

Double poly bag with desiccant packs in a fiber drum. Cool dry storage (15-30°C).

Pack Size: 50 kgs

ISSUED DATE: 11/16/05

# DELTA $\Delta$ ANALYTICAL

## PRODUCT SPECIFICATION

### FoodState™ Potassium Concentrate

Product No. 100017

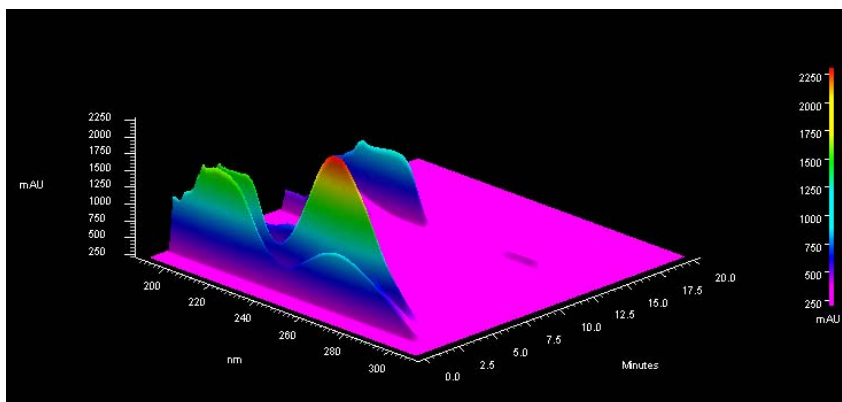
#### PRODUCT CHARACTERISTICS

Botanical Name  
Plant Part  
Description  
Flavor  
Preservatives

#### SPECIFICATION

*Saccharomyces cerevisiae*  
Whole Plant  
Fresh/Frozen *S. cerevisiae*  
Typical of *S. cerevisiae*  
None

#### Nutrient Peptide Chromatogram



#### Finished Raw Material



#### PHYSICAL DATA

Residual Moisture  
Bulk Density (Tapped)

#### METHOD

Thermogravimetric  
USP28<616>

#### SPECIFICATION

$3.5 \pm 1.5\%$   
 $0.75 \pm 0.10 \text{ g/mL}$

#### NUTRITION INFORMATION

Potassium  
  
Calories (per 100 grams)  
Total Fat  
Total Carbohydrate  
Protein

ICP  
  
Calculation

5.0% Minimum  
  
258 kcal  
2% Maximum  
20% Minimum  
40% Minimum

#### MICROBIOLOGICAL PROFILE

Total Aerobic Plate Count  
*E. Coli*  
Total Coliforms  
Yeast & Mold

AOAC 966.23  
AOAC 991.14  
AOAC 991.14  
FDA-BAM 7<sup>th</sup> Ed.

10,000 per Gram Maximum  
Less than 10 per Gram Maximum  
1,000 per Gram Maximum  
300 per Gram Maximum

#### PACKAGING and STORAGE

Double poly bag with desiccant packs in a fiber drum. Cool dry storage (15-30°C).  
Pack Size: 50 kgs

ISSUED DATE: 11/16/05

# DELTA $\Delta$ ANALYTICAL

## PRODUCT SPECIFICATION

### FoodState™ Selenium Concentrate

Product No. 100018

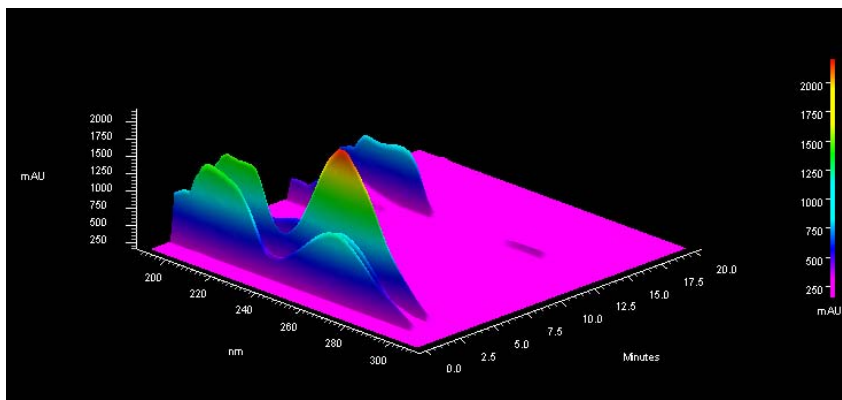
#### PRODUCT CHARACTERISTICS

Botanical Name  
Plant Part  
Description  
Flavor  
Preservatives

#### SPECIFICATION

*Saccharomyces cerevisiae*  
Whole Plant  
Fresh/Frozen *S. cerevisiae*  
Typical of *S. cerevisiae*  
None

#### Nutrient Peptide Chromatogram



#### Finished Raw Material



#### PHYSICAL DATA

Residual Moisture  
Bulk Density (Tapped)

#### METHOD

Thermogravimetric  
USP28<616>

#### SPECIFICATION

$3.5 \pm 1.5\%$   
 $0.80 \pm 0.10 \text{ g/mL}$

#### NUTRITION INFORMATION

Selenium  
  
Calories (per 100 grams)  
Total Fat  
Total Carbohydrate  
Protein

ICP  
  
Calculation

0.1% Minimum  
  
218 kcal  
2% Maximum  
10% Minimum  
40% Minimum

#### MICROBIOLOGICAL PROFILE

Total Aerobic Plate Count  
*E. Coli*  
Total Coliforms  
Yeast & Mold

AOAC 966.23  
AOAC 991.14  
AOAC 991.14  
FDA-BAM 7<sup>th</sup> Ed.

10,000 per Gram Maximum  
Less than 10 per Gram Maximum  
1,000 per Gram Maximum  
300 per Gram Maximum

#### PACKAGING and STORAGE

Double poly bag with desiccant packs in a fiber drum. Cool dry storage (15-30°C).  
Pack Size: 50 kgs

ISSUED DATE: 11/16/05

# DELTA $\Delta$ ANALYTICAL

## PRODUCT SPECIFICATION

### FoodState™ Silicon Concentrate

Product No. 100029

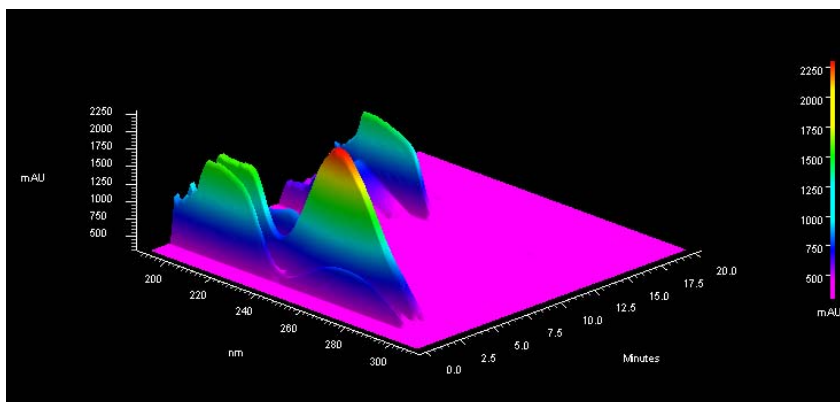
#### PRODUCT CHARACTERISTICS

Botanical Name  
Plant Part  
Description  
Flavor  
Preservatives

#### SPECIFICATION

*Saccharomyces cerevisiae*  
Whole Plant  
Fresh/Frozen *S. cerevisiae*  
Typical of *S. cerevisiae*  
None

#### Nutrient Peptide Chromatogram



#### Finished Raw Material



#### PHYSICAL DATA

Residual Moisture  
Bulk Density (Tapped)

#### METHOD

Thermogravimetric  
USP28<616>

#### SPECIFICATION

$3.5 \pm 1.5\%$   
 $0.75 \pm 0.10 \text{ g/mL}$

#### NUTRITION INFORMATION

Silicon  
Calories (per 100 grams)  
Total Fat  
Total Carbohydrate  
Protein

ICP  
Calculation

1.0% Minimum  
318 kcal  
2% Maximum  
25% Minimum  
50% Minimum

#### MICROBIOLOGICAL PROFILE

Total Aerobic Plate Count  
*E. Coli*  
Total Coliforms  
Yeast & Mold

AOAC 966.23  
AOAC 991.14  
AOAC 991.14  
FDA-BAM 7<sup>th</sup> Ed.

10,000 per Gram Maximum  
Less than 10 per Gram Maximum  
1,000 per Gram Maximum  
300 per Gram Maximum

#### PACKAGING and STORAGE

Double poly bag with desiccant packs in a fiber drum. Cool dry storage (15-30°C).  
Pack Size: 50 kgs

ISSUED DATE: 11/16/05

# DELTA ANALYTICAL

## PRODUCT SPECIFICATION

### FoodState™ Sulfur Concentrate

Product No. 100036

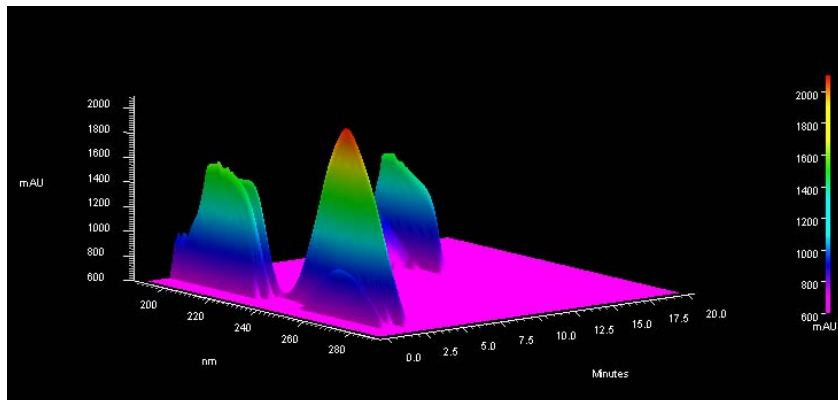
#### PRODUCT CHARACTERISTICS

Botanical Name  
Plant Part  
Description  
Flavor  
Preservatives

#### SPECIFICATION

*Saccharomyces cerevisiae*  
Whole Plant  
Fresh/Frozen *S. cerevisiae*  
Typical of *S. cerevisiae*  
None

#### Nutrient Peptide Chromatogram



#### Finished Raw Material



#### PHYSICAL DATA

Residual Moisture  
Bulk Density (Tapped)

#### METHOD

Thermogravimetric  
USP28<616>

#### SPECIFICATION

$3.5 \pm 1.5\%$   
 $0.75 \pm 0.15 \text{ g/mL}$

#### NUTRITION INFORMATION

Sulfur

Combustion/IR

5% Minimum

Calories (per 100 grams)

Calculation

318 kcal

Total Fat

2% Maximum

Total Carbohydrate

25% Minimum

Protein

50% Minimum

#### MICROBIOLOGICAL PROFILE

Total Aerobic Plate Count

AOAC 966.23

10,000 per Gram Maximum

*E. Coli*

AOAC 991.14

Less than 10 per Gram Maximum

Total Coliforms

AOAC 991.14

1,000 per Gram Maximum

Yeast & Mold

FDA-BAM 7<sup>th</sup> Ed.

300 per Gram Maximum

#### PACKAGING and STORAGE

Double poly bag with desiccant packs in a fiber drum. Cool dry storage (15-30°C).

Pack Size: 50 kgs

ISSUED DATE: 11/16/05

# DELTA $\Delta$ ANALYTICAL

## PRODUCT SPECIFICATION

### FoodState™ Vanadium Concentrate

Product No. 100020

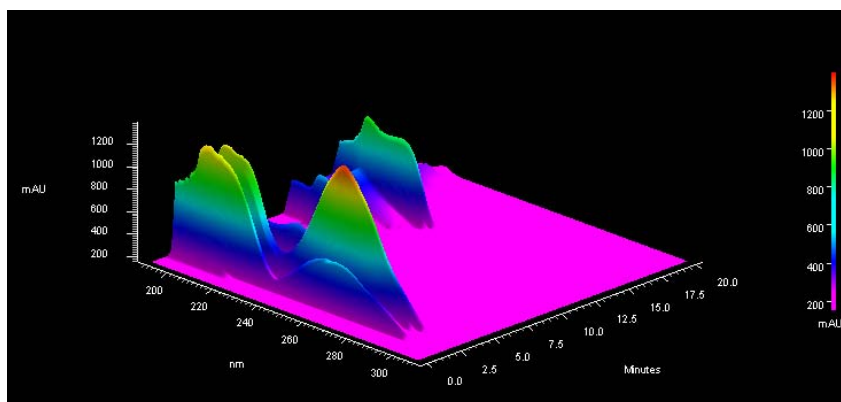
#### PRODUCT CHARACTERISTICS

Botanical Name  
Plant Part  
Description  
Flavor  
Preservatives

#### SPECIFICATION

*Saccharomyces cerevisiae*  
Whole Plant  
Fresh/Frozen *S. cerevisiae*  
Typical of *S. cerevisiae*  
None

#### Nutrient Peptide Chromatogram



#### Finished Raw Material



#### PHYSICAL DATA

Residual Moisture  
Bulk Density (Tapped)

#### METHOD

Thermogravimetric  
USP28<616>

#### SPECIFICATION

$3.5 \pm 1.5\%$   
 $0.75 \pm 0.10 \text{ g/mL}$

#### NUTRITION INFORMATION

Vanadium

ICP

0.1% Minimum

Calories (per 100 grams)

Calculation

298 kcal

Total Fat

2% Maximum

Total Carbohydrate

30% Minimum

Protein

40% Minimum

#### MICROBIOLOGICAL PROFILE

Total Aerobic Plate Count

AOAC 966.23

10,000 per Gram Maximum

*E. Coli*

AOAC 991.14

Less than 10 per Gram Maximum

Total Coliforms

AOAC 991.14

1,000 per Gram Maximum

Yeast & Mold

FDA-BAM 7<sup>th</sup> Ed.

300 per Gram Maximum

#### PACKAGING and STORAGE

Double poly bag with desiccant packs in a fiber drum. Cool dry storage (15-30°C).

Pack Size: 50 kgs

ISSUED DATE: 11/16/05